

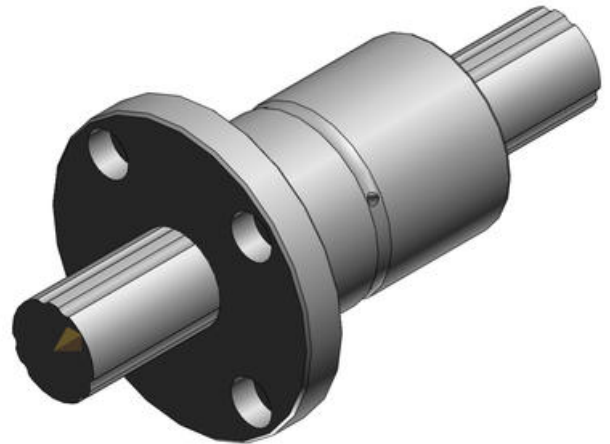


THK - LF - TORQUE BALL BUSHING

LF6-



- High load capacity in radial and rotational direction
- High performance in demanding environments.
- High speed and quiet
- Long maintenance intervals



PRODUCT DESCRIPTION

Ball bearings bushing model LF has, depending on size, 2 to 3 running grooves in the shaft.

TECHNICAL DATA

Dynamic load	1,18 kN
Length	25 mm
Outer diameter	14 mm
Static load	2,16 kN